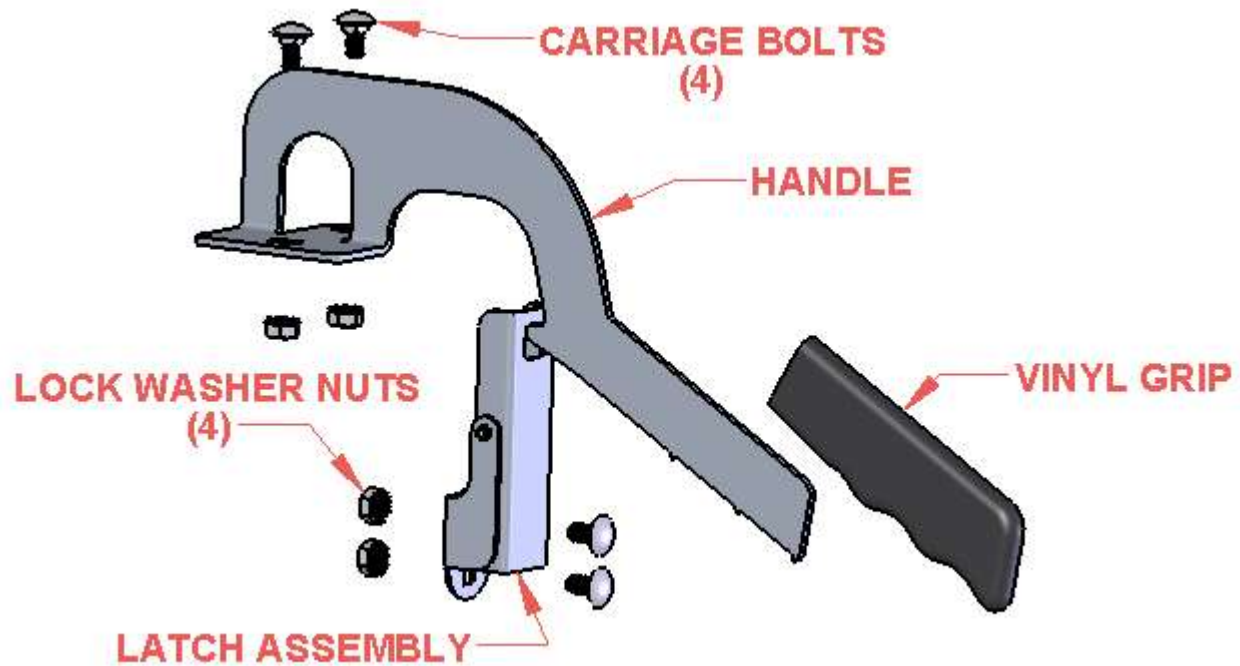


HANDLE & LATCH

PARTS LIST



TOOLS NEEDED:

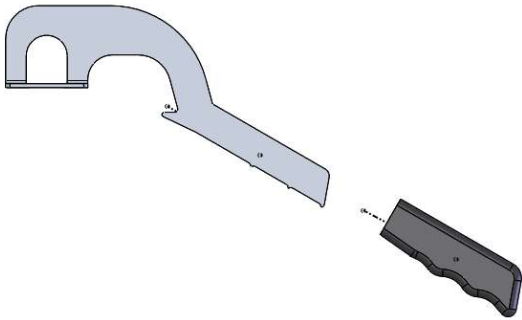
PENCIL OR MARKER

HAND DRILL

5/16" DIA. DRILL BIT

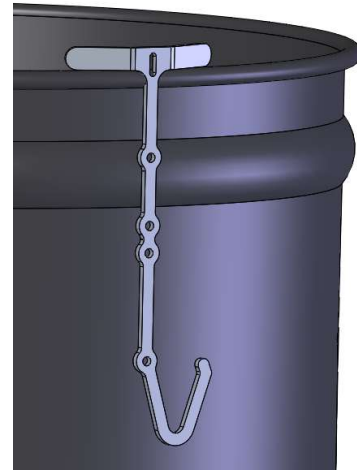
7/16" WRENCH OR SOCKET

STEP 1



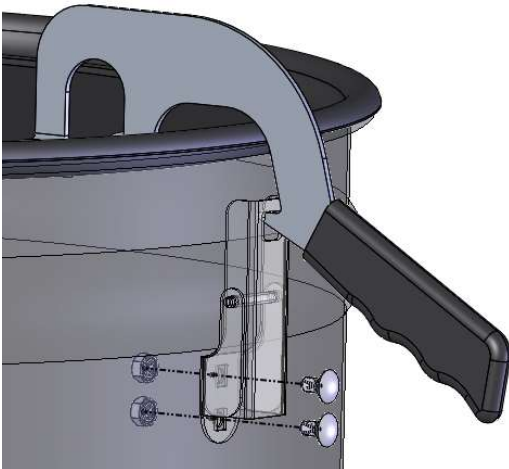
PUSH VINYL GRIP ON TO HANDLE.

STEP 2



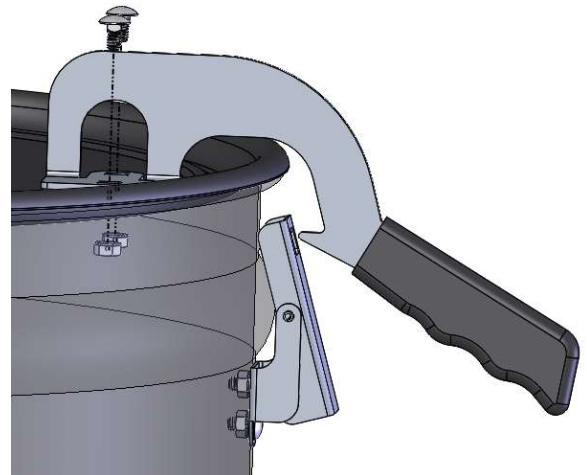
PLACE (OPTIONAL) TEMPLATE/HOOK ON DRUM LIP AND MARK THE (2) MOUNTING HOLES FOR LATCH. REMOVE TEMPLATE AND DRILL (2) 5/16" DIA. HOLES. SEE **STEP 2A** IF YOU DON'T HAVE THE (OPTIONAL) TEMPLATE/HOOK.

STEP 2A



PLACE HANDLE ON LID AND HANG LATCH ASSEMBLY ON THE HANDLE HOOK AND MARK BOTTOM MOUNTING HOLE. REMOVE LATCH AND MARK SECOND MOUNTING HOLE $\frac{3}{4}$ " ABOVE THE FIRST MARK AND DRILL THE (2) 5/16" DIA. HOLES AND MOUNT LATCH ASSEMBLY TO DRUM WITH (2) CARRIAGE BOLTS AND (2) LOCK WASHER NUTS.

STEP 3



PLACE HANDLE ON LID. MAKE SURE LATCH WILL DISENGAGE THE HANDLE HOOK AND MARK THE (2) MOUNTING HOLES REMOVE HANDLE AND DRILL (2) 5/16" DIA. HOLES AND MOUNT HANDLE TO LID WITH (2) CARRIAGE BOLTS AND (2) LOCK WASHER NUTS.